

Design & Animation 9/10 – WLSS – Mr. Hauk

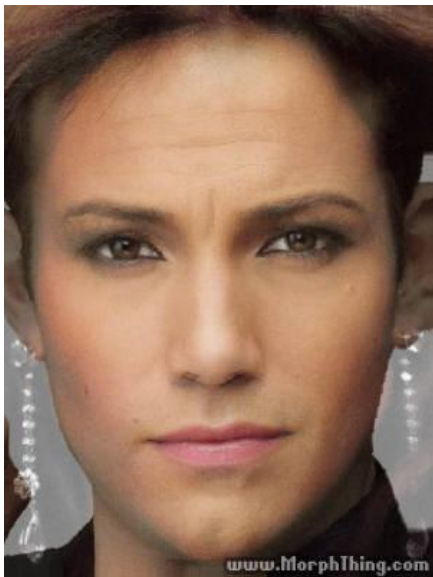
Photoshop: Project 6 – Gender Bending



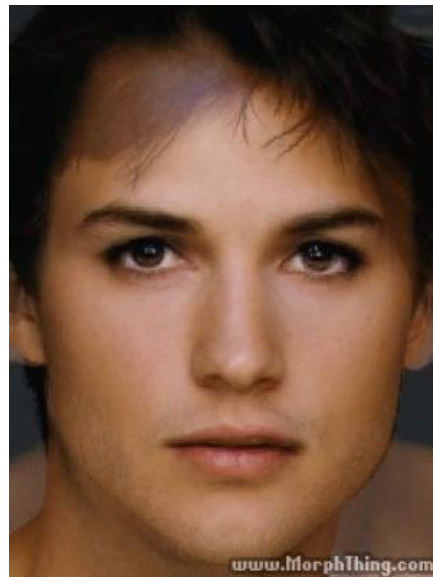
Name:

Instructions:

Your task is to design an original morph of two faces (one male, one female). You will need to use layer masks in order to get the best results. You decide which elements from each face are included in your final image. Your final image must include the names of your two subjects on the image. Your image can be constructed with Internet graphics (try to find high resolution images whenever possible), stock art, and/or scanned images.



Ben Affleck & Jennifer Lopez



Demi Moore & Ashton Kutcher

You will be marked according to the following criteria (10 marks):

Project 7 - Criteria	Max Score	Your Score
Composition shows no evidence of editing	2	
Images used are sharp and clear	2	
Selection borders are precise	2	
Demonstrates a high degree of creativity/originality	2	
Names of subjects used are included on the image	2	

Basic Steps to Morph images:

1. Open two images
2. Drag one image onto the other with the move tool.
3. Reduce the opacity of the top image. (approx.50-60%)
4. Edit→Free Transform (line up the eyes, nose and mouth)
5. Turn the opacity of the top layer back to 100%
6. Click on the layer mask icon in the layer panel.
7. Choose the paintbrush (hardness=0%)
8. Black paints off the mask, white paints on the mask (grey partially reveals the mask)
9. Decide which areas you would like to combine by adding or removing the layer mask.