

Design & Animation 9/10 – WLSS – Mr. Hauk

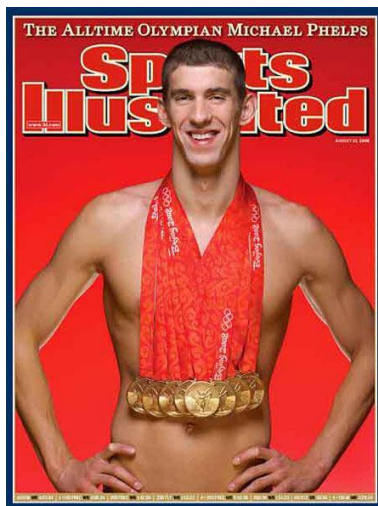
Photoshop: Project 3 – Magazine Cover



Instructions:

Your task is to create a magazine cover (see examples show below and in class). Your cover may be from any publication that clearly shows the face of an individual. You will be replacing the face in this cover with your own. It is important to try to match the colour and lighting (brightness/contrast) as closely as possible. You may also need to change any copy (print) that references the former individual or better suits your cover. You may scan images from publications for this project.

You will use various selection tools to cut out the head to be substituted and use Levels, Colour Balance, Hue/Saturation, & Unsharp Mask to simulate the lighting, colour, contrast, and sharpness from the original cover.



You will be marked according to the following criteria (10 marks):

Project 3 - Criteria	Max Score	Your Score
Composition shows no evidence of editing	2	
Images used are sharp and clear	2	
Brightness/Contrast of substitution is consistent with original cover	2	
Colour Balance of substitution is consistent with original cover	2	
Class time is used effectively	2	